



CERTIFIED SIM RACING

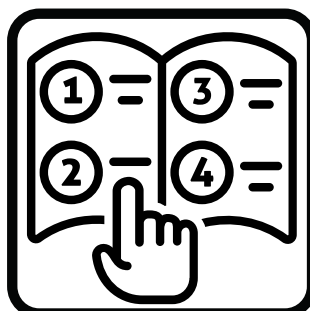


PRIME COCKPIT Assembly Guide

Recommended
1-2 People



Read Instructions
10 Minutes



Assembly Time
60-120 Minutes

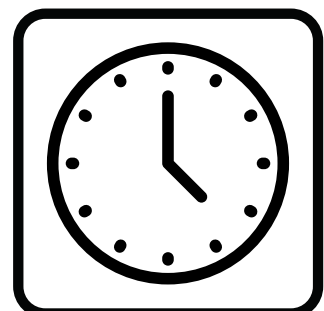


TABLE OF CONTENT

PAGE 1

NOTICES

PAGE 2

WHAT'S IN THE BOX

PAGE 3 - 8

ASSEMBLY INSTRUCTIONS



Need Help? We're here for you! [Contact our support team:](#)



WARNING



Children should not use unsupervised



Do not exceed load capacity of **200KG**



Do not stand on the Cockpit



Take care when assembling



Do not push or pull Cockpit

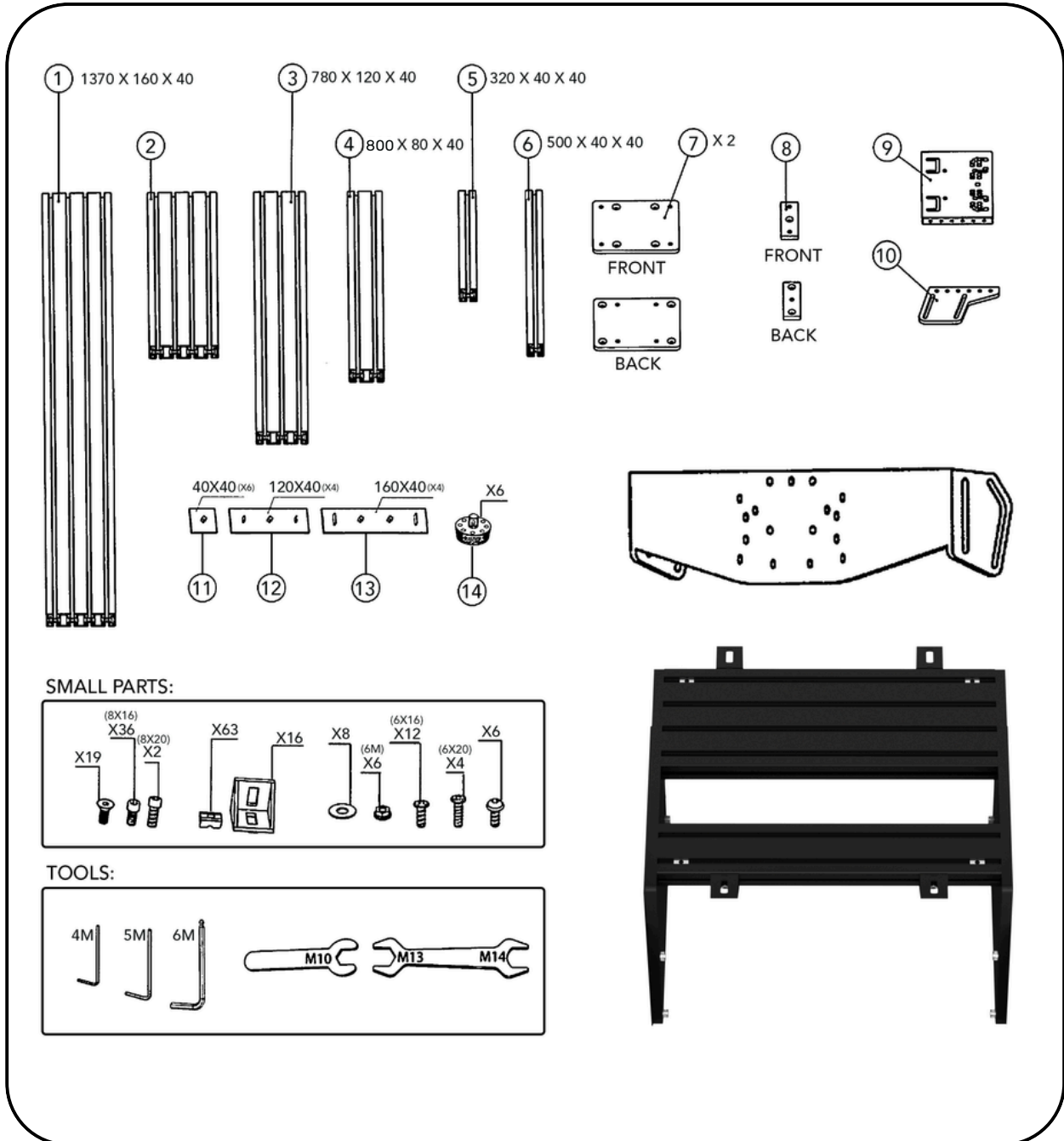


FAILURE TO COMPLY WITH OR OBSERVE ALL ASSEMBLY, SAFETY, AND OPERATION INSTRUCTIONS REGARDING THE USE OF THIS PRODUCT MAY RESULT IN **PROPERTY DAMAGE** OR **BODILY INJURY**.

- This document contains important safety regulations. Any non-conforming use may result in personal injury or mechanical damage.
- Please read this user manual carefully before use as it provides key information about safety, use, and assembly of the **PRIME Cockpit**.
- Ensure that you have received all parts according to the part checklist prior to installation. If any parts are missing or faulty, contact the GT Omega support team for replacements.
- **Do not** over tighten the screws during installation.
- This product contains small items that could be a choking hazard if swallowed. Keep these items away from children.
- This product is designed for indoor use only. Using the product outdoors could lead to product failure and personal injury.
- Alteration or modification of any factory components outlined in the checklist will automatically void your warranty.
- Place the **PRIME Cockpit** away from corrosive gas, water and dusty environments.

The **PRIME Cockpit** is designed for indoor use and dry work areas only. Under no circumstances does the manufacturer accept warranty claims or liability claims for damages caused from improper use or handling.

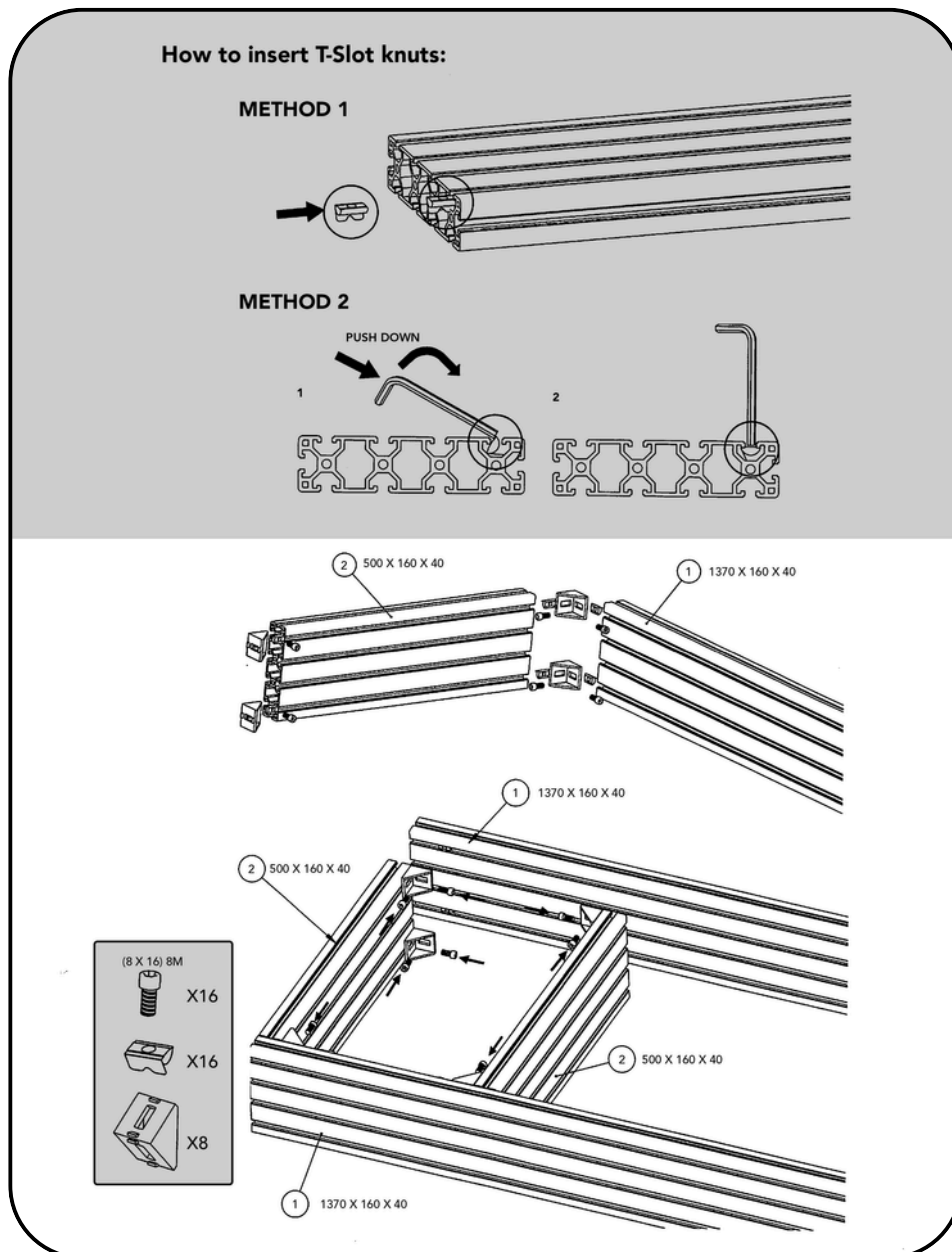
WHAT'S IN THE BOX



If you are missing any parts, please contact our customer support team who can assist.

ASSEMBLY INSTRUCTIONS

1



a Insert T-nuts into the profile channels and align them for the corner brackets.

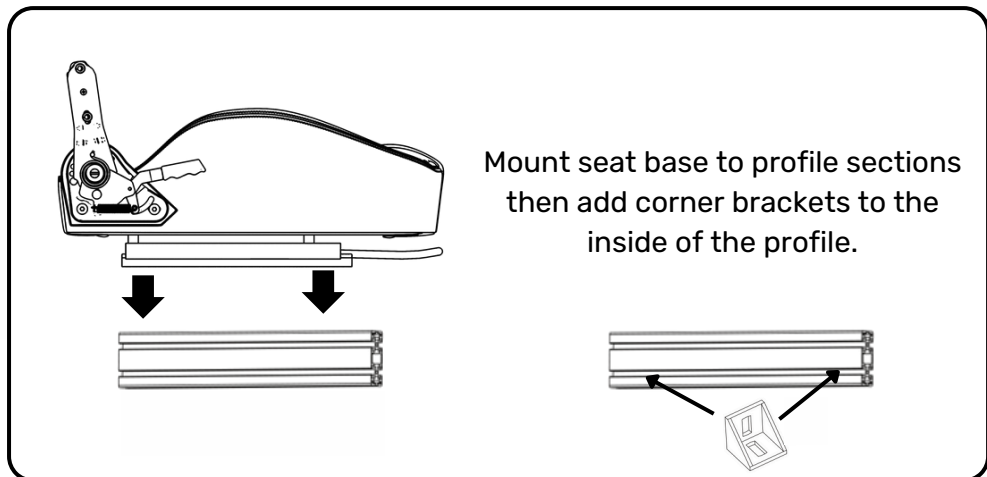
b Attach the corner brackets to join the profile sections.

! Avoid over-tightening screws. As this may damage the product.

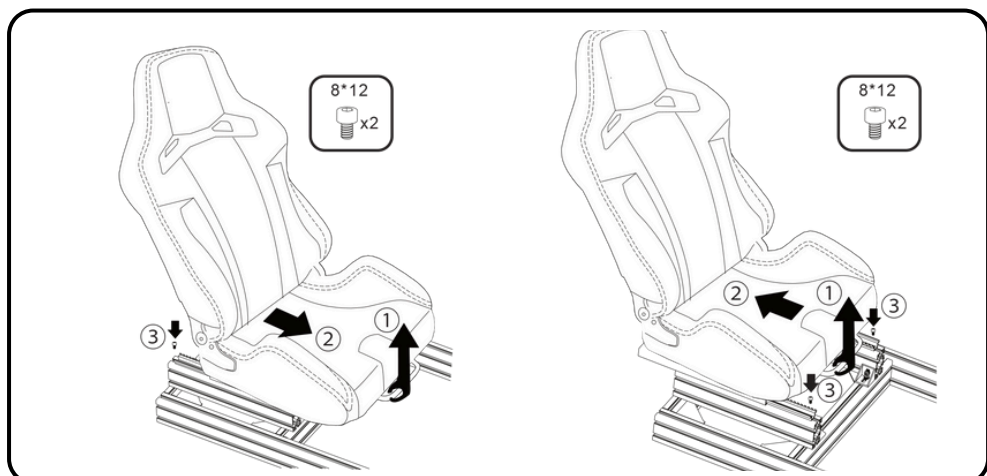
ASSEMBLY INSTRUCTIONS

2

a



b



a

Mount the seat base onto the profiles, then add corner brackets inside the frame.

b

Attach the brackets to the cockpit frame and adjust the seat to your preferred position.



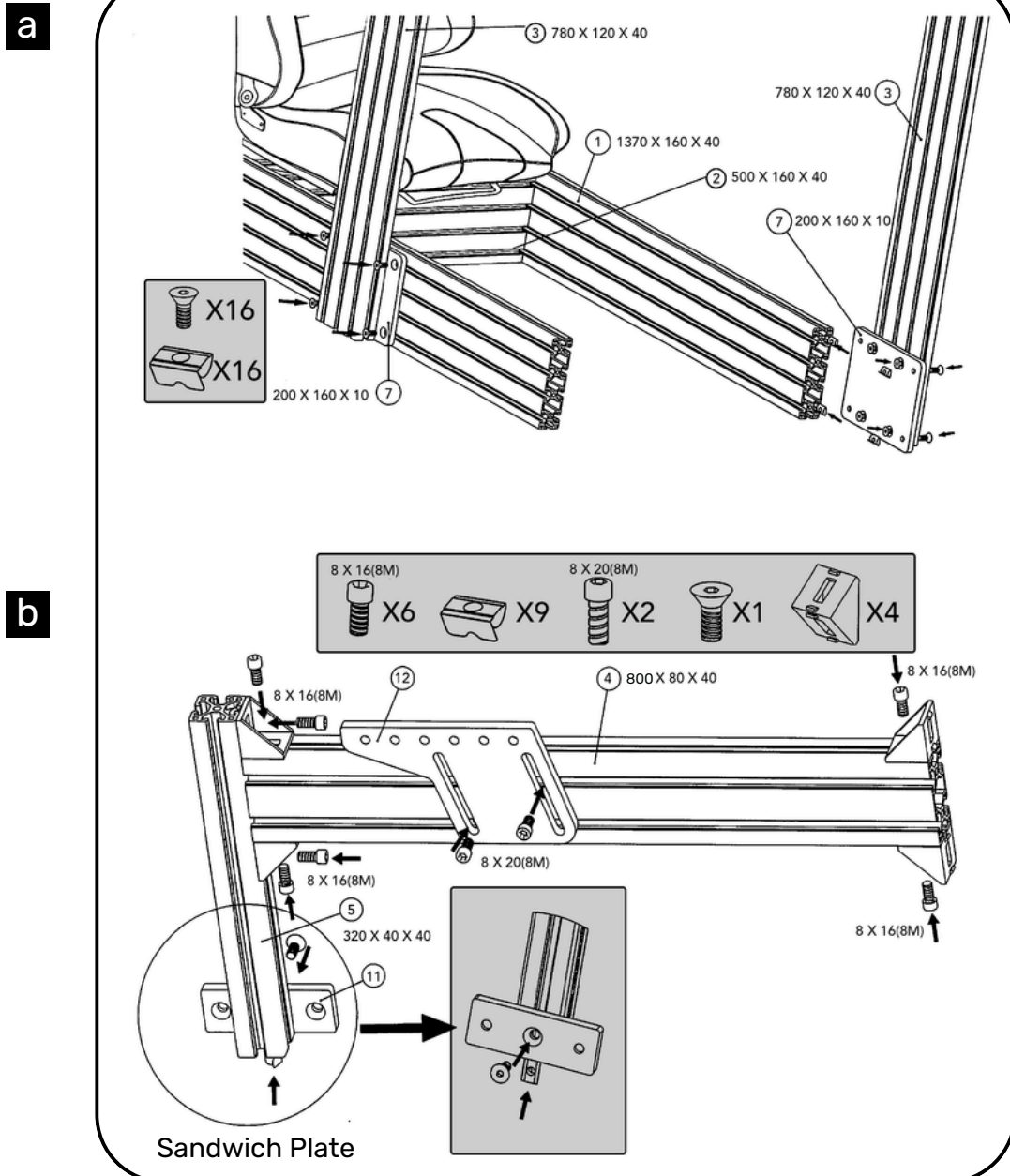
Installation guide is for **GT Omega** racing seats. If you are using something else the process may be different.



Avoid over-tightening screws. As this may damage the product.

ASSEMBLY INSTRUCTIONS

3 STEP THREE



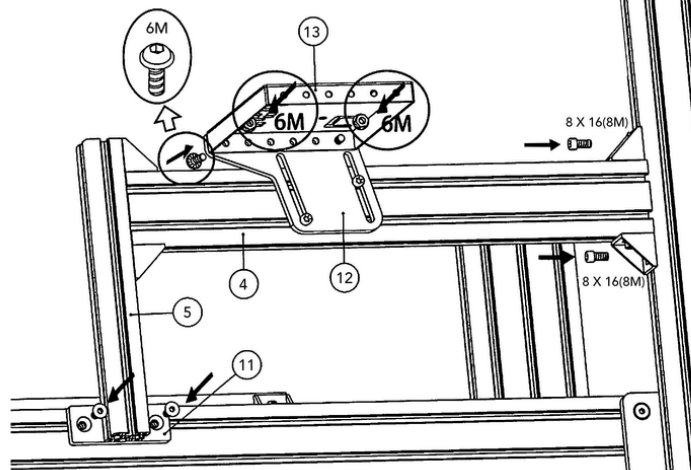
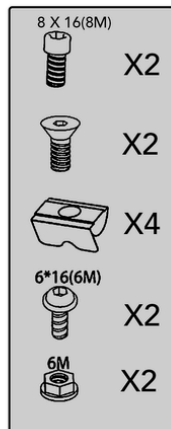
a Attach the sandwich plates to the uprights, then mount the uprights to the cockpit frame using T-Nuts and Countersunk bolts.

b Construct the side support bracket as shown. The sandwich plate will connect to your cockpit frame so positioning is important if you want a left- or right-side shifter.

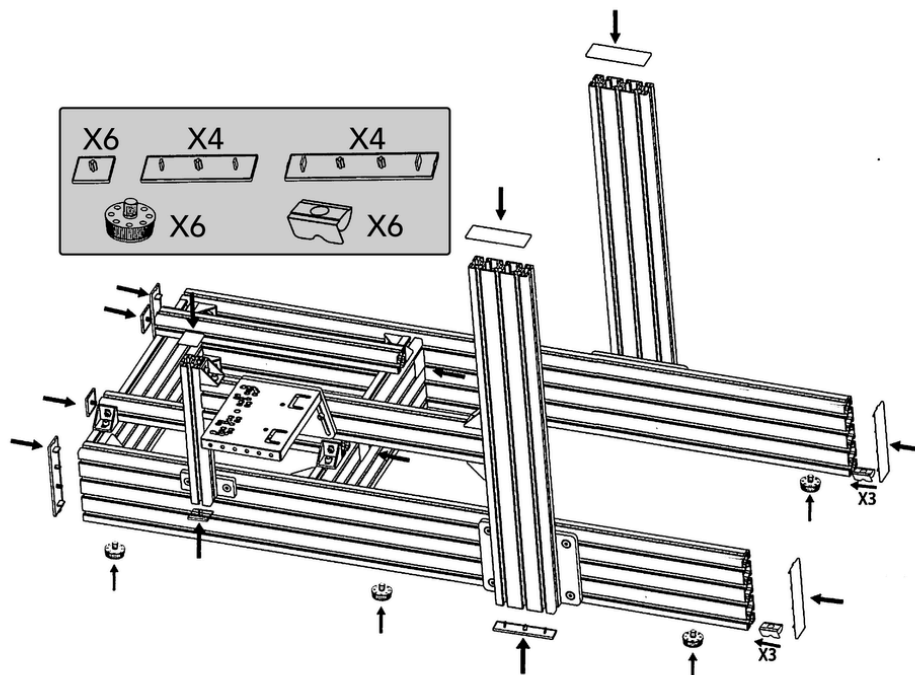
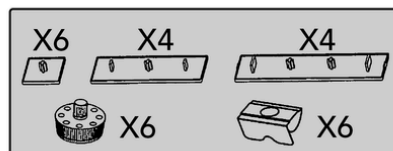
ASSEMBLY INSTRUCTIONS

4

a



b



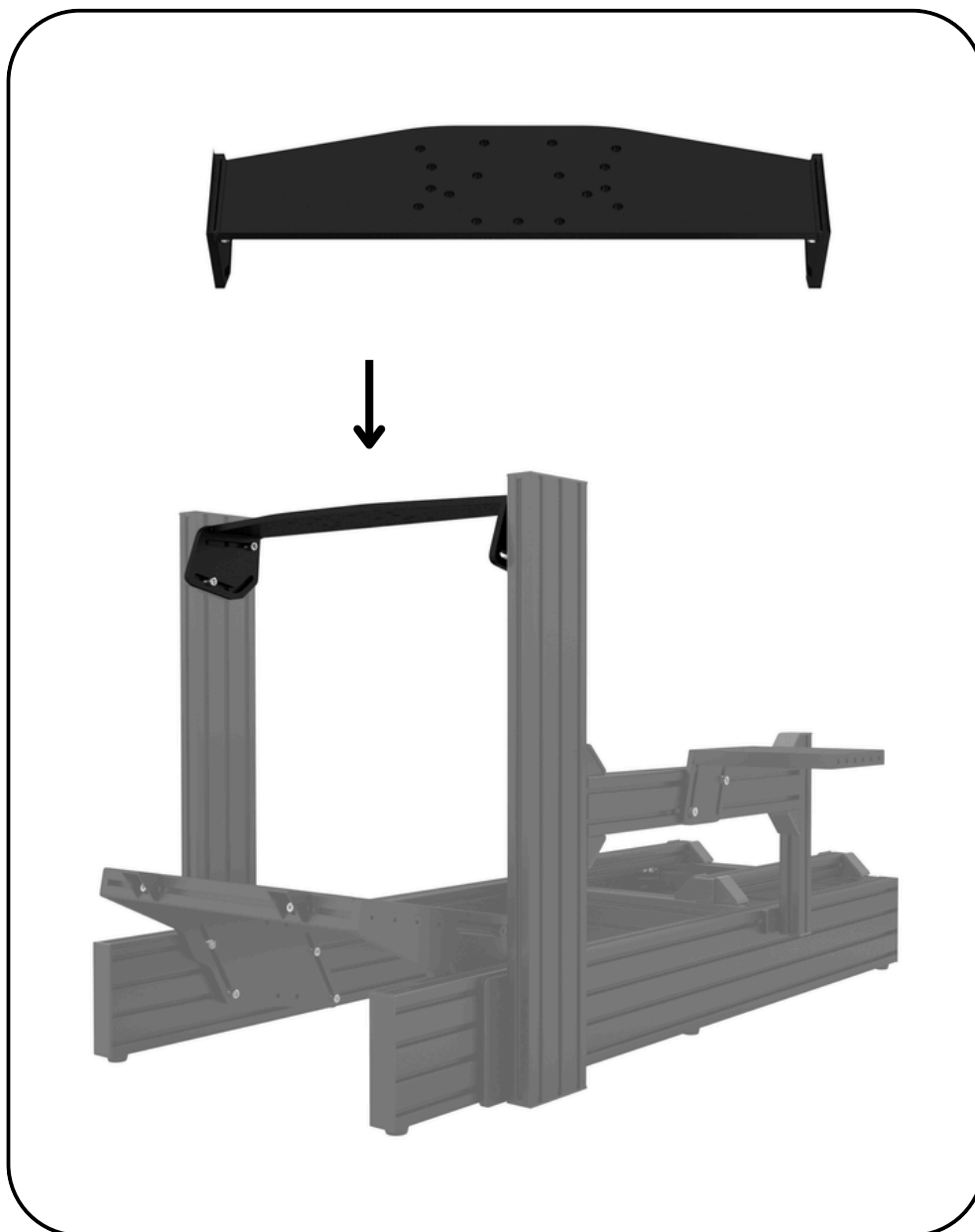
a Connect the side support bracket to your cockpit frame and attach the gear shifter mount plate with bolts.

b Tilt the cockpit on one side to attach your feet and place the plastic caps on the exposed ends of the aluminium profile.

! The nuts are steel lock nuts, designed to grip into the material, this may cause superficial scratching.

ASSEMBLY INSTRUCTIONS

5



a

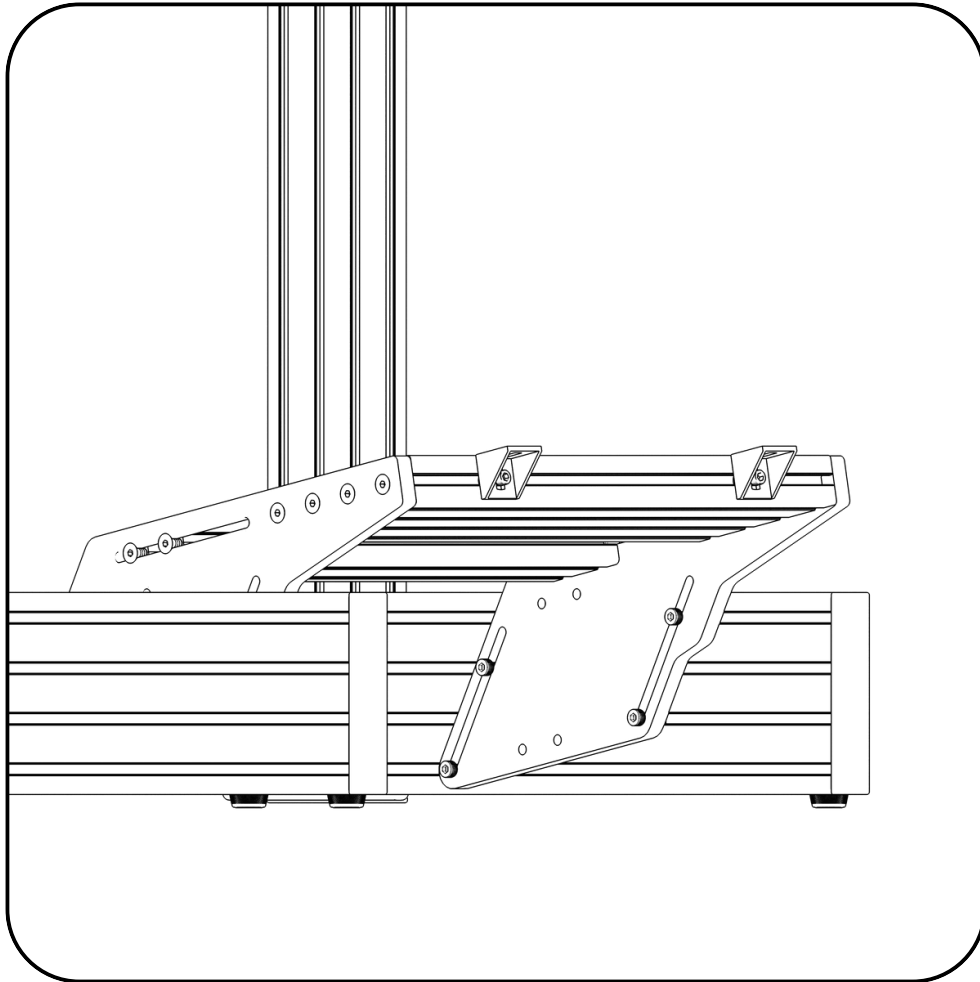
Using bolts, attach the wheel deck at your preferred height and angle. Don't fully tighten these until you are happy with the position.



Keep your bolts loose until you configure your ideal wheel deck positioning. Then tighten everything up.

ASSEMBLY INSTRUCTIONS

6



- a** Place T-Nuts in the channels. Line up the side brackets for the pedal tray then bolt them into place.
- b** Place T-Nuts in the profile sections for the pedal tray then bolt them into place between the side brackets.



Keep your bolts loose until you configure your ideal pedal tray positioning. Then tighten everything up.

Unlock the full potential of your PRIME COCKPIT



PRIME Keyboard Tray

This practical attachment gives you the control you need without ever having to leave your seat. The PRIME keyboard tray can be mounted at any height on the left- or right-side of your cockpit.



PRIME Caster Wheels

Highly mobile wheels with ultra-durable construction. These heavy-duty caster wheels come in a set of 6. Height adjustable rubber feet protect your floors and help you keep your cockpit balanced.



Simulator Floor Mat

The Simulator Floor Mat is designed to provide a slip and vibration free surface for your cockpit. The perfect finishing touch for any racing set up.



Simulator Monitor Stand

The Simulator Monitor Stand offers stable, eye-level screen placement with no vibrations. Upgradable to triple and quadruple screen setups. Strong, adjustable, and built to last.

Bundle and Save!

Save **up to 17%** on your sim racing accessories when you build your own accessory bundles.

[View Sim Accessory Bundles](#)