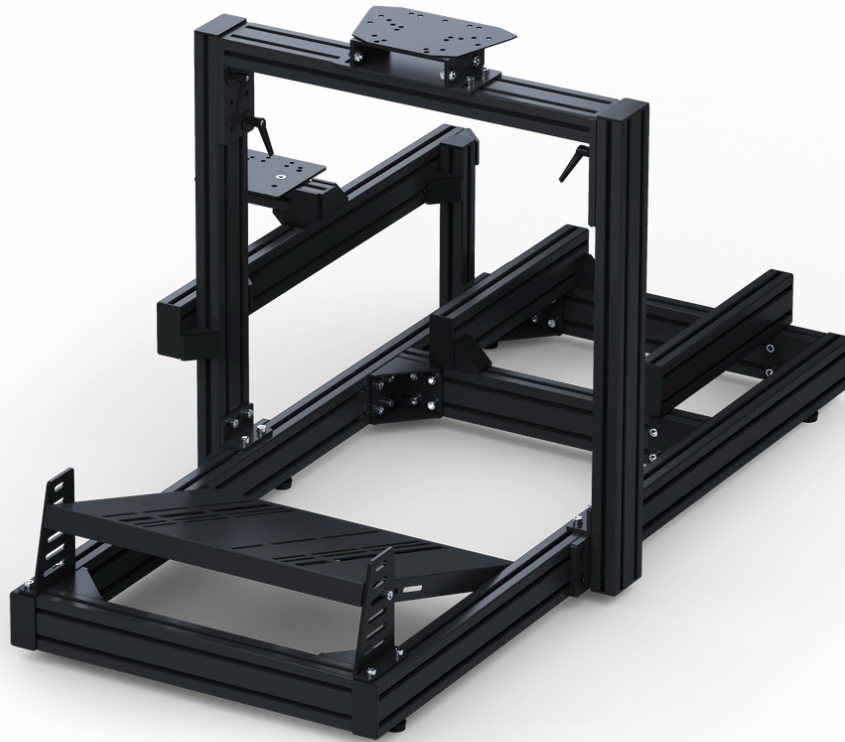




CERTIFIED SIM RACING



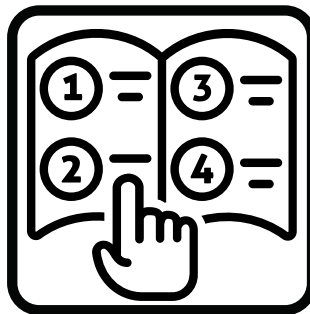
PRIME LITE

Assembly Guide

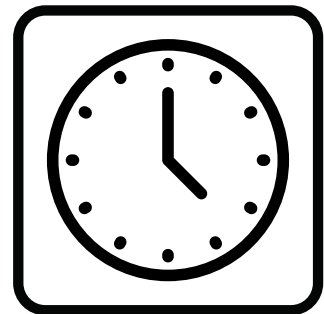
Recommended
1-2 People



Read Instructions
10 Minutes



Assembly Time
60-120 Minutes



gtomega.com

TABLE OF CONTENT

PAGE 1

NOTICES

PAGE 2

WHAT'S IN THE BOX

PAGE 3 - 11

FRAME ASSEMBLY

PAGE 12 - 15

WHEEL DECK ASSEMBLY



Need Help? We're here for you! [Contact our support team:](#)

SCAN ME



WARNING



Children should not use unsupervised



Do not exceed load capacity of **200KG**



Do not stand on the Cockpit



Take care when assembling



Do not push or pull Cockpit



FAILURE TO COMPLY WITH OR OBSERVE ALL ASSEMBLY, SAFETY, AND OPERATION INSTRUCTIONS REGARDING THE USE OF THIS PRODUCT MAY RESULT IN **PROPERTY DAMAGE** OR **BODILY INJURY**.

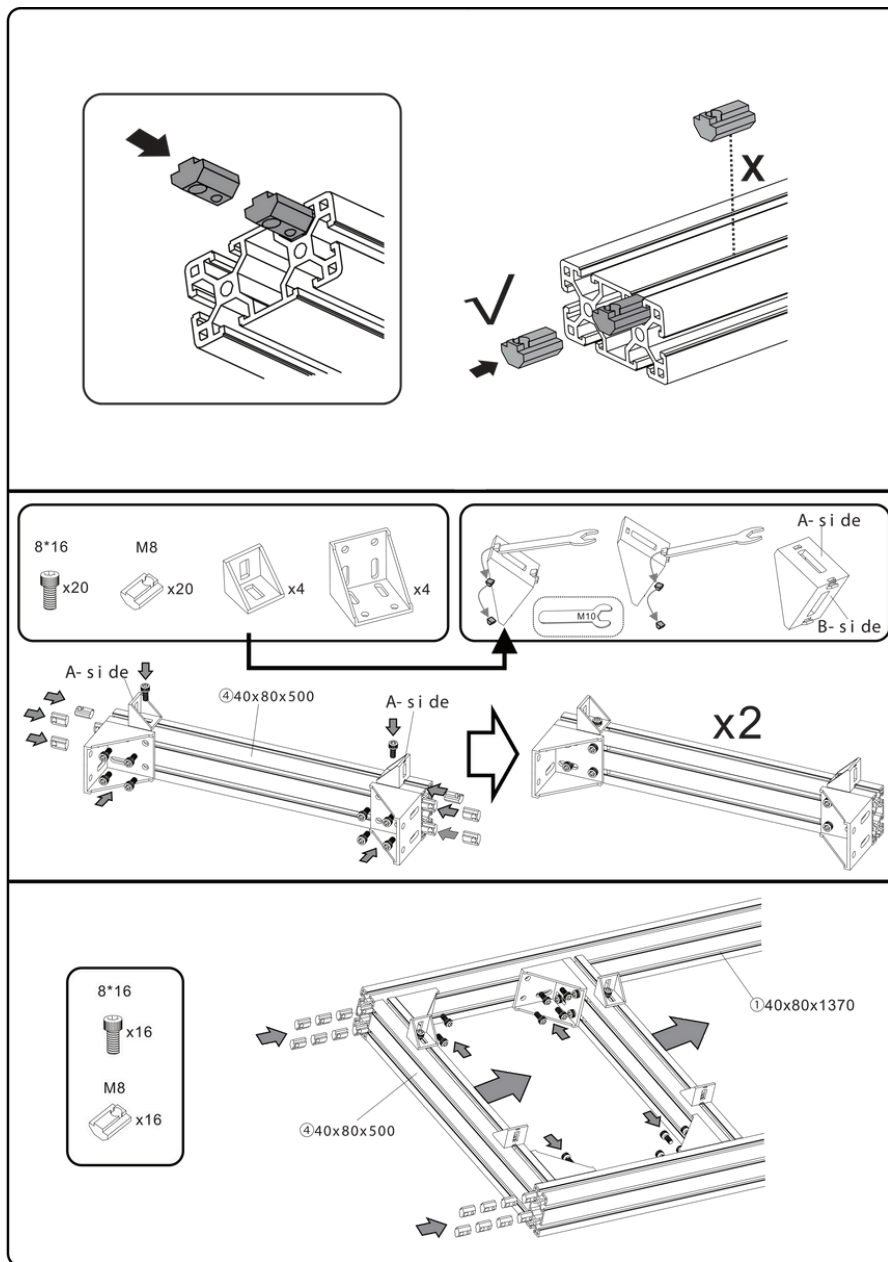
- This document contains important safety regulations. Any non-conforming use may result in personal injury or mechanical damage.
- Please read this user manual carefully before use as it provides key information about safety, use, and assembly of the **PRIME LITE Cockpit**.
- Ensure that you have received all parts according to the part checklist prior to installation. If any parts are missing or faulty, contact the GT Omega support team for replacements.
- **Do not** over tighten the screws during installation.
- This product contains small items that could be a choking hazard if swallowed. Keep these items away from children.
- This product is designed for indoor use only. Using the product outdoors could lead to product failure and personal injury.
- Alteration or modification of any factory components outlined in the checklist will automatically void your warranty.
- Place the **PRIME LITE Cockpit** away from corrosive gas, water and dusty environments.

The **PRIME LITE Cockpit** is designed for indoor use and dry work areas only. Under no circumstances does the manufacturer accept warranty claims or liability claims for damages caused from improper use or handling.

ASSEMBLY INSTRUCTIONS

1

a




a

Insert T-nuts into the profile channels and align them for the corner brackets.

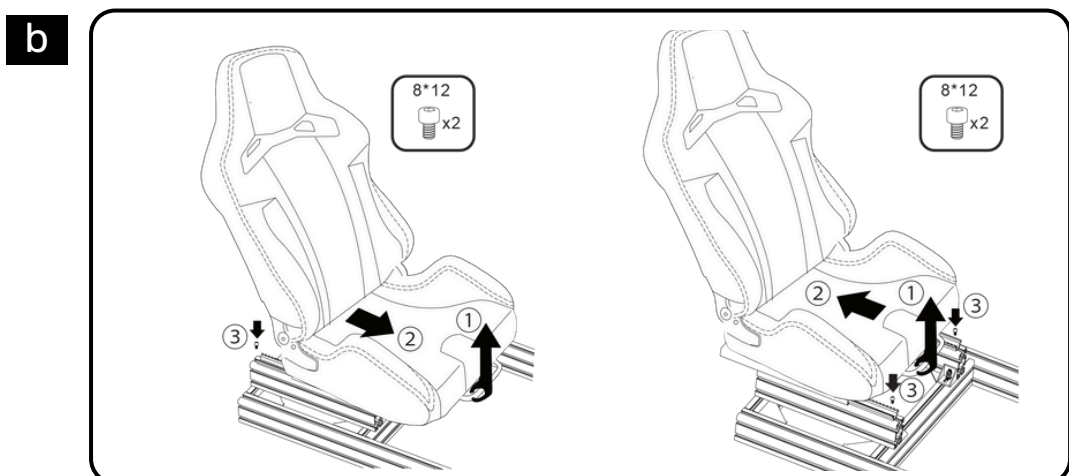
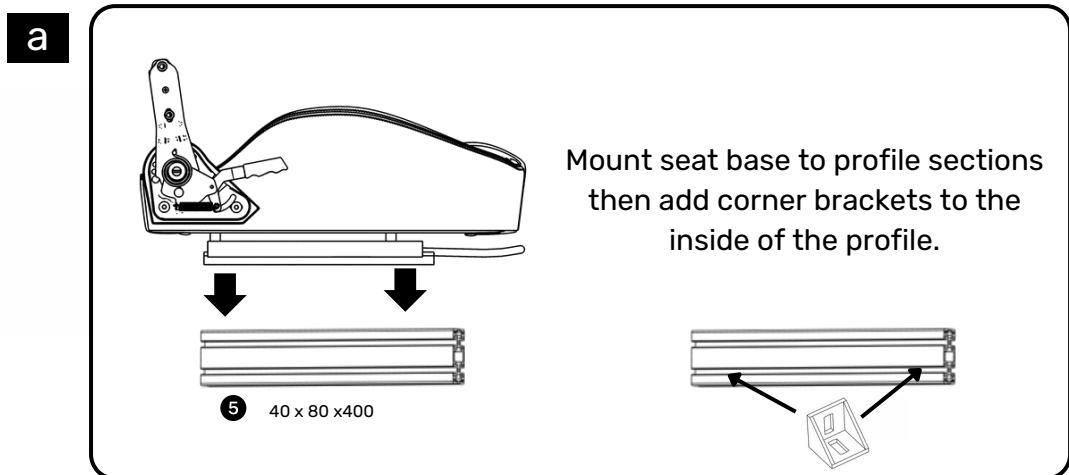
b

Attach the corner brackets to join the profile sections.

 Do not overtighten screws—this may damage components.

ASSEMBLY INSTRUCTIONS

2



a Mount the seat base onto the profiles, then add corner brackets inside the frame.

b Attach the brackets to the cockpit frame and adjust the seat to your preferred position.

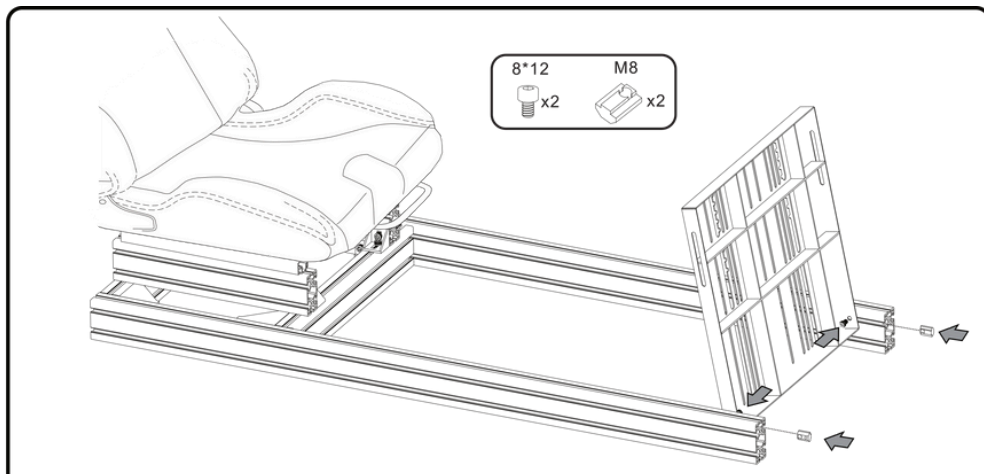


Installation guide is for GT Omega racing seats. If you are using something else the process may be different.

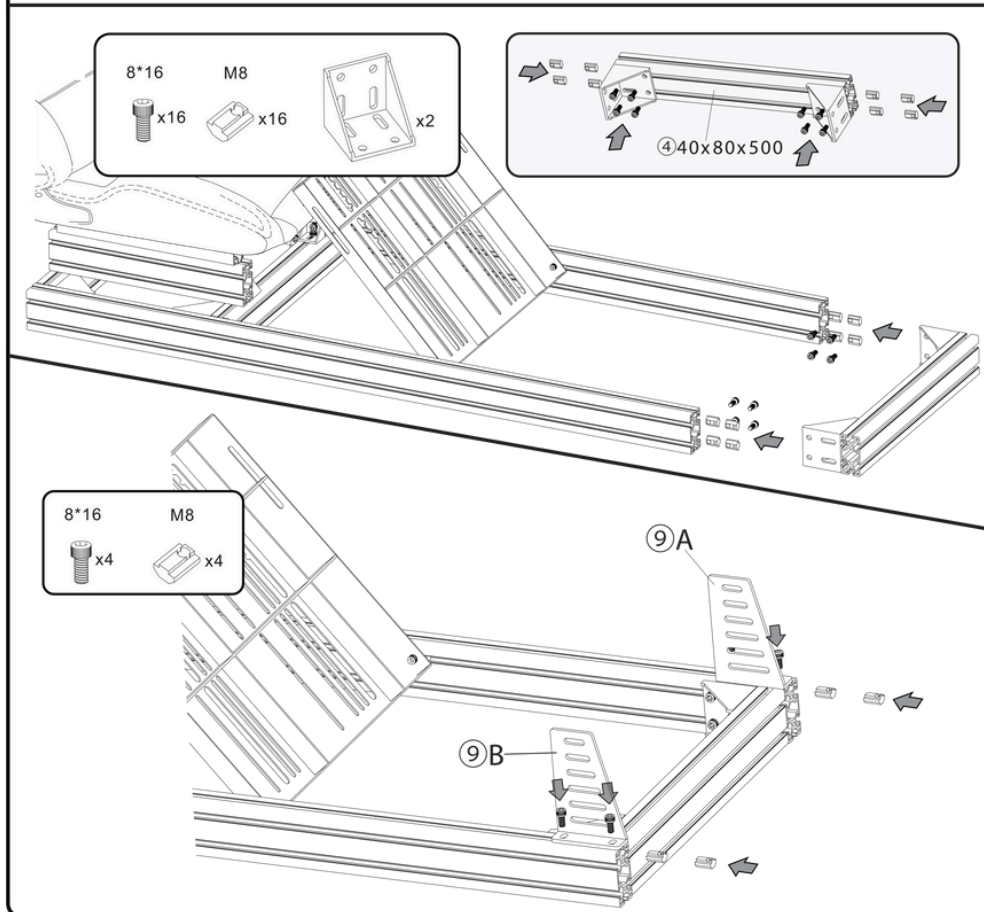
ASSEMBLY INSTRUCTIONS

3

a




b



a Insert T-nuts into the lower channels and mount the lower pedal tray section.

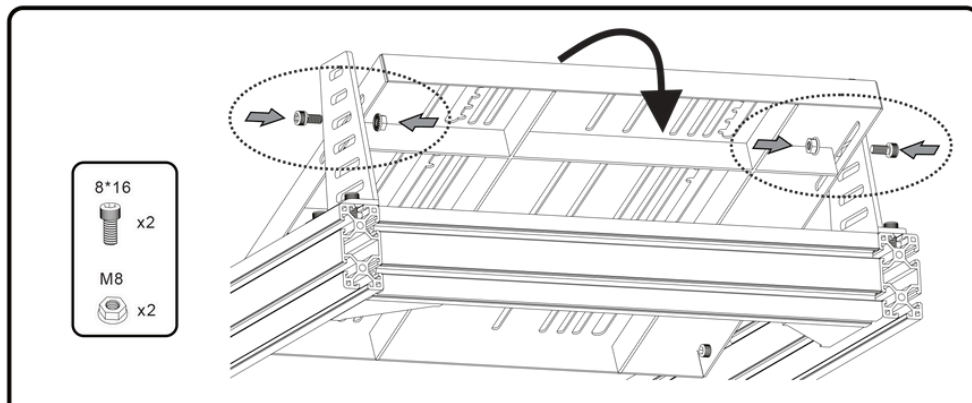
b Add two more T-nuts to the upper channels on both sides and attach the height adjustment sections.

 Steel lock nuts are designed to grip into the material and may cause minor surface scratches.

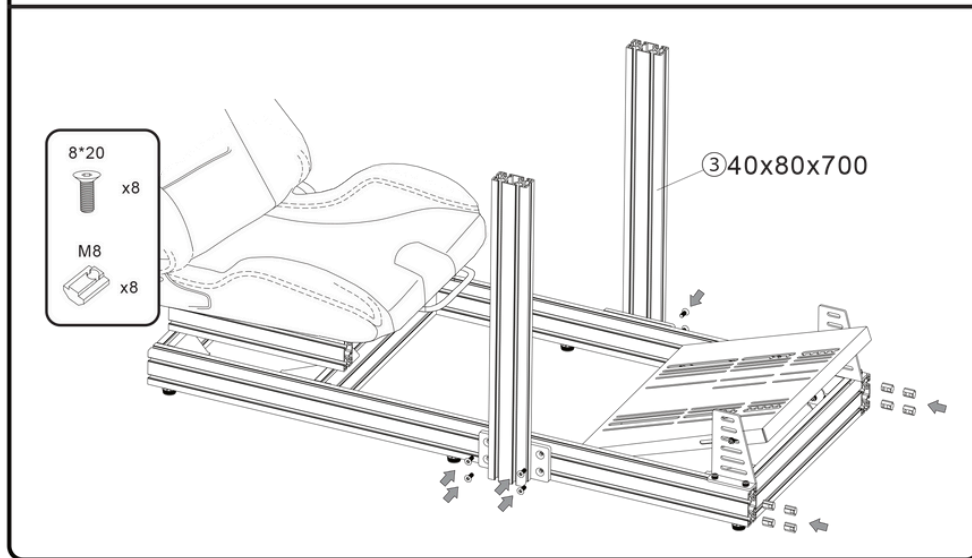
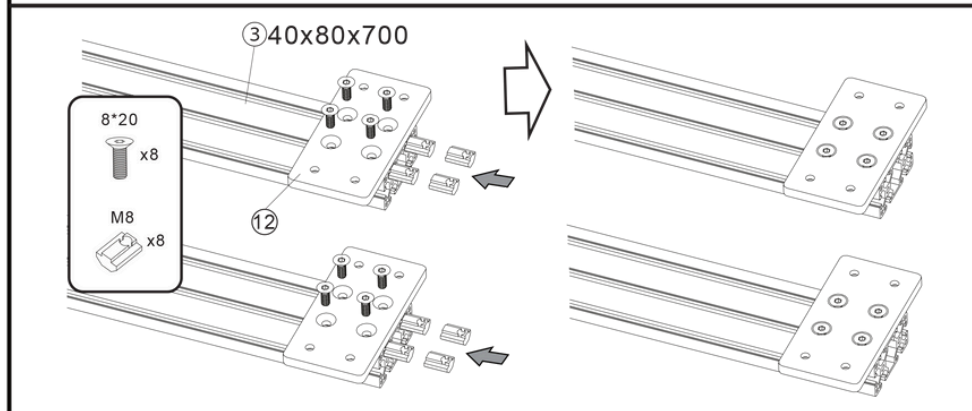
ASSEMBLY INSTRUCTIONS

4

a



b



a Adjust the pedal tray to your preferred angle and secure with bolts and nuts.

b Attach the sandwich plates to the uprights, then mount the uprights to the cockpit frame.

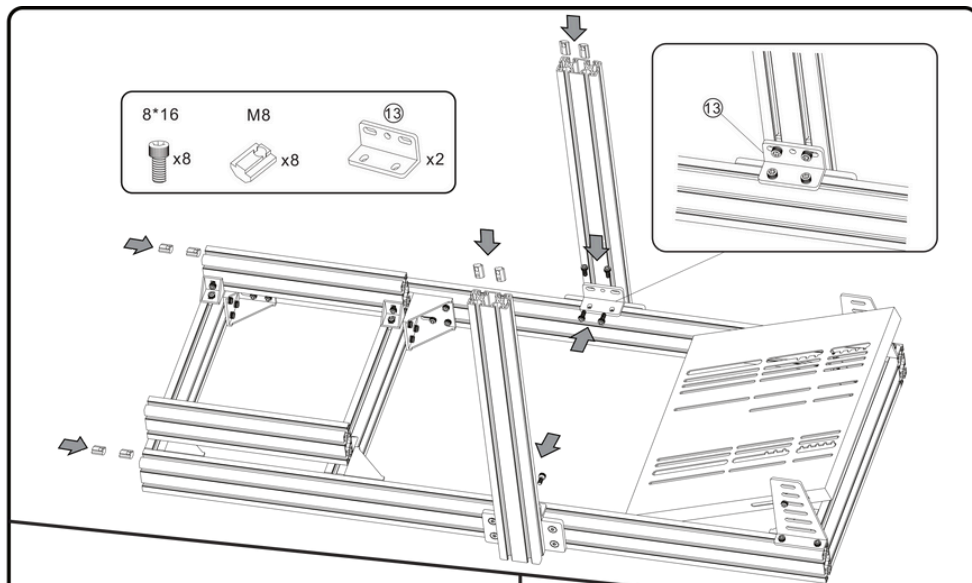


Do not fully tighten the bolts until the rig has been adjusted to your preferred racing position.

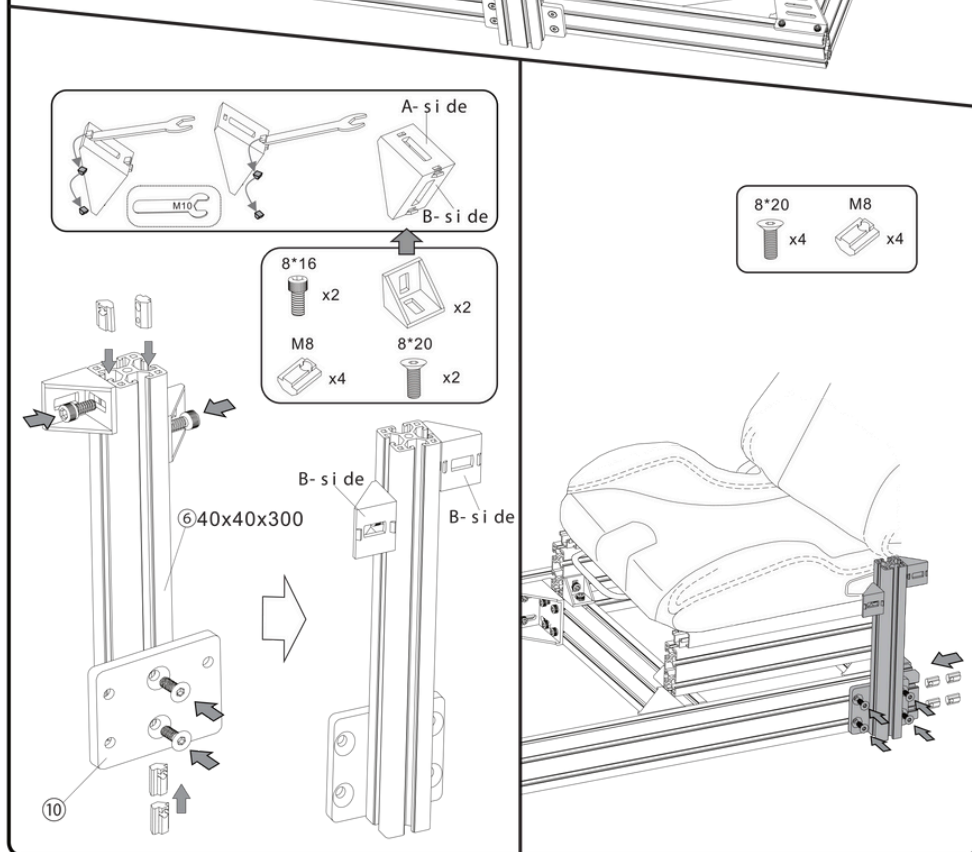
ASSEMBLY INSTRUCTIONS

5

a



b



a Secure the uprights with angle supports and insert T-nuts for the side support.

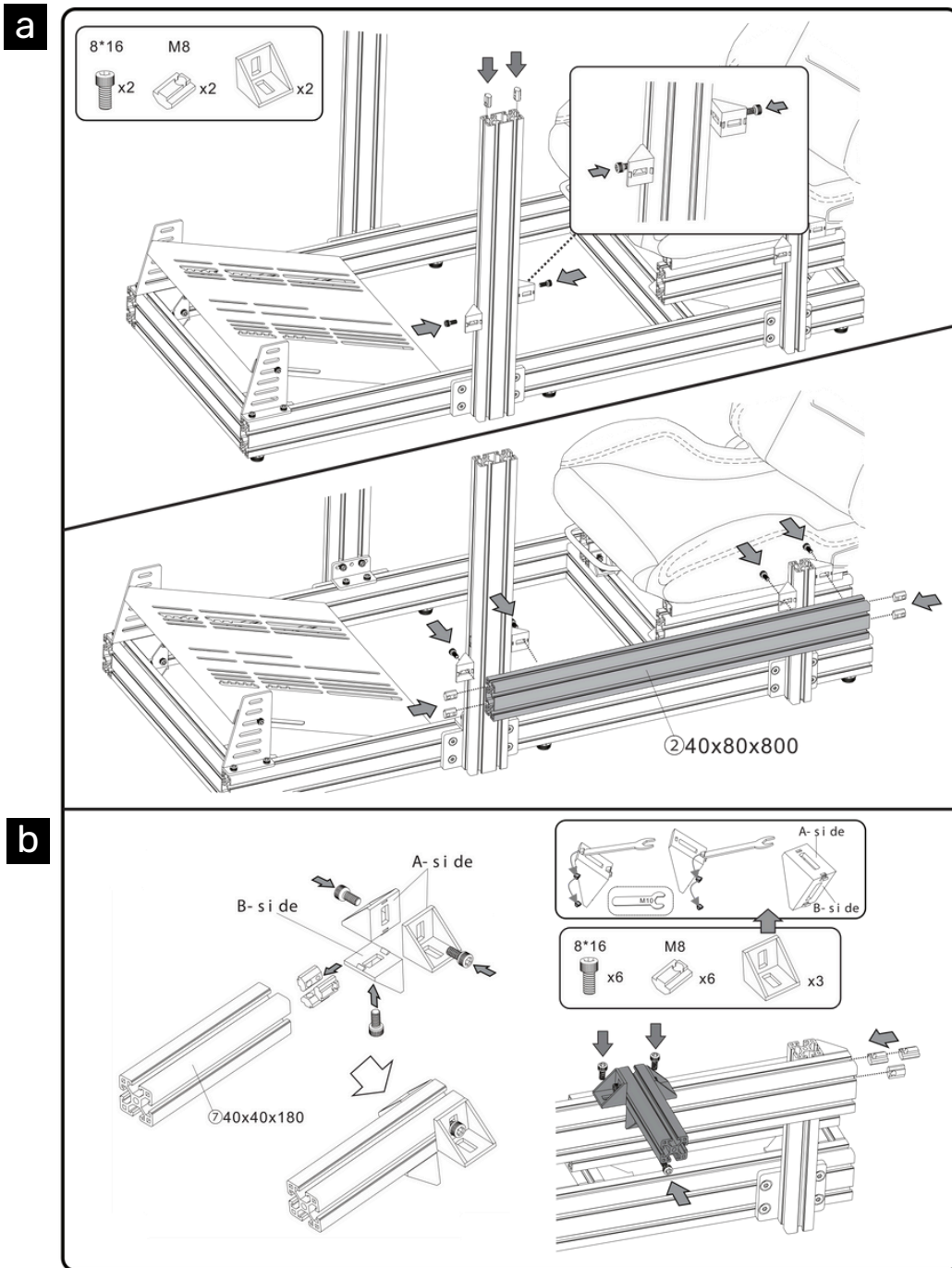
b Connect corner brackets to the side support upright and attach it to the frame with a sandwich plate.



The side bracket can be added on the **left** or **right** side of your cockpit. Whichever you prefer!


ASSEMBLY INSTRUCTIONS

6



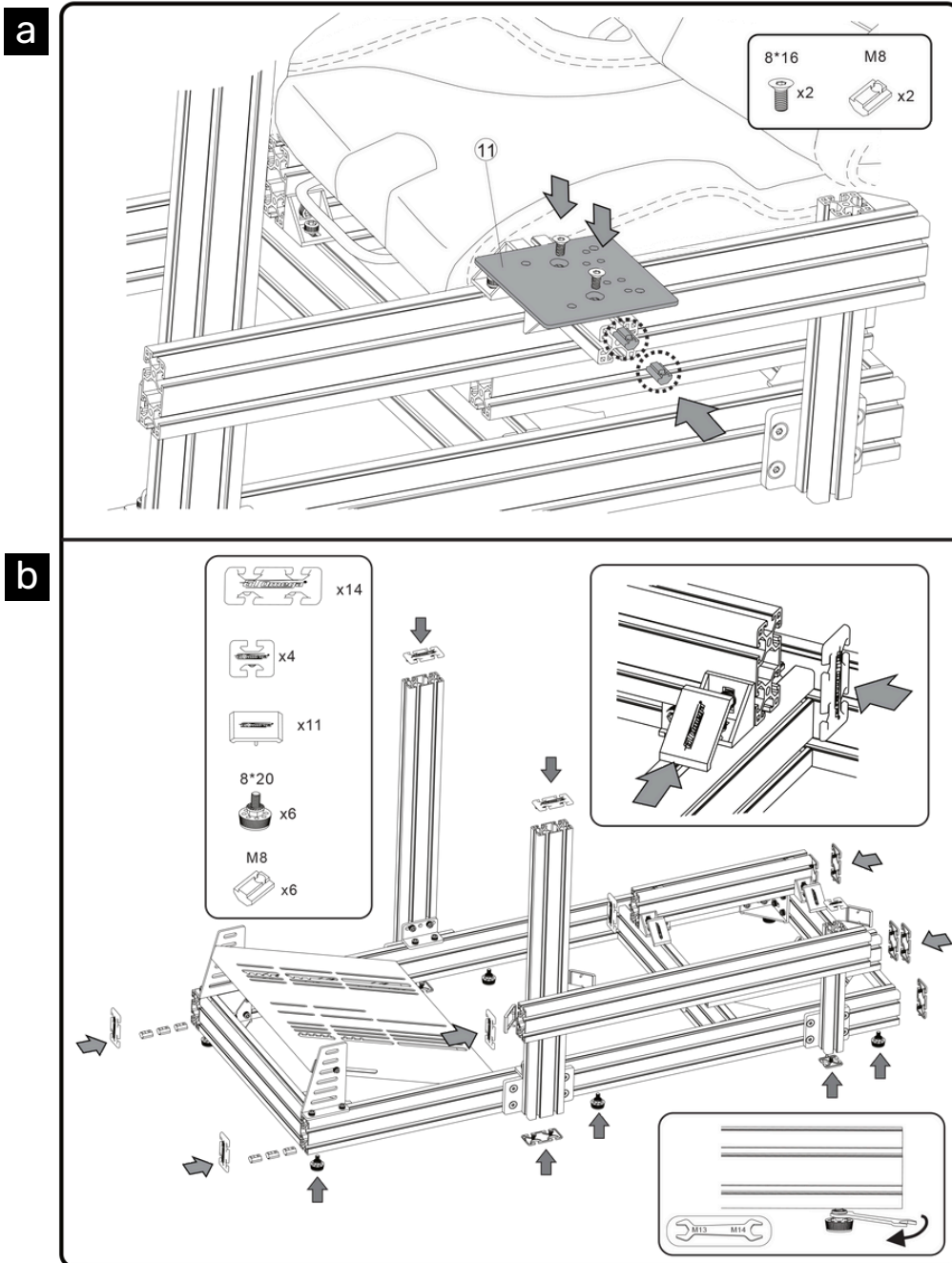
a Attach corner brackets to the upright on your chosen side, then install the side support bracket.

b Use T-nuts, bolts, and corner brackets to mount the gear shifter arm.

 Steel lock nuts are designed to grip into the material and may cause minor surface scratches.

ASSEMBLY INSTRUCTIONS

7



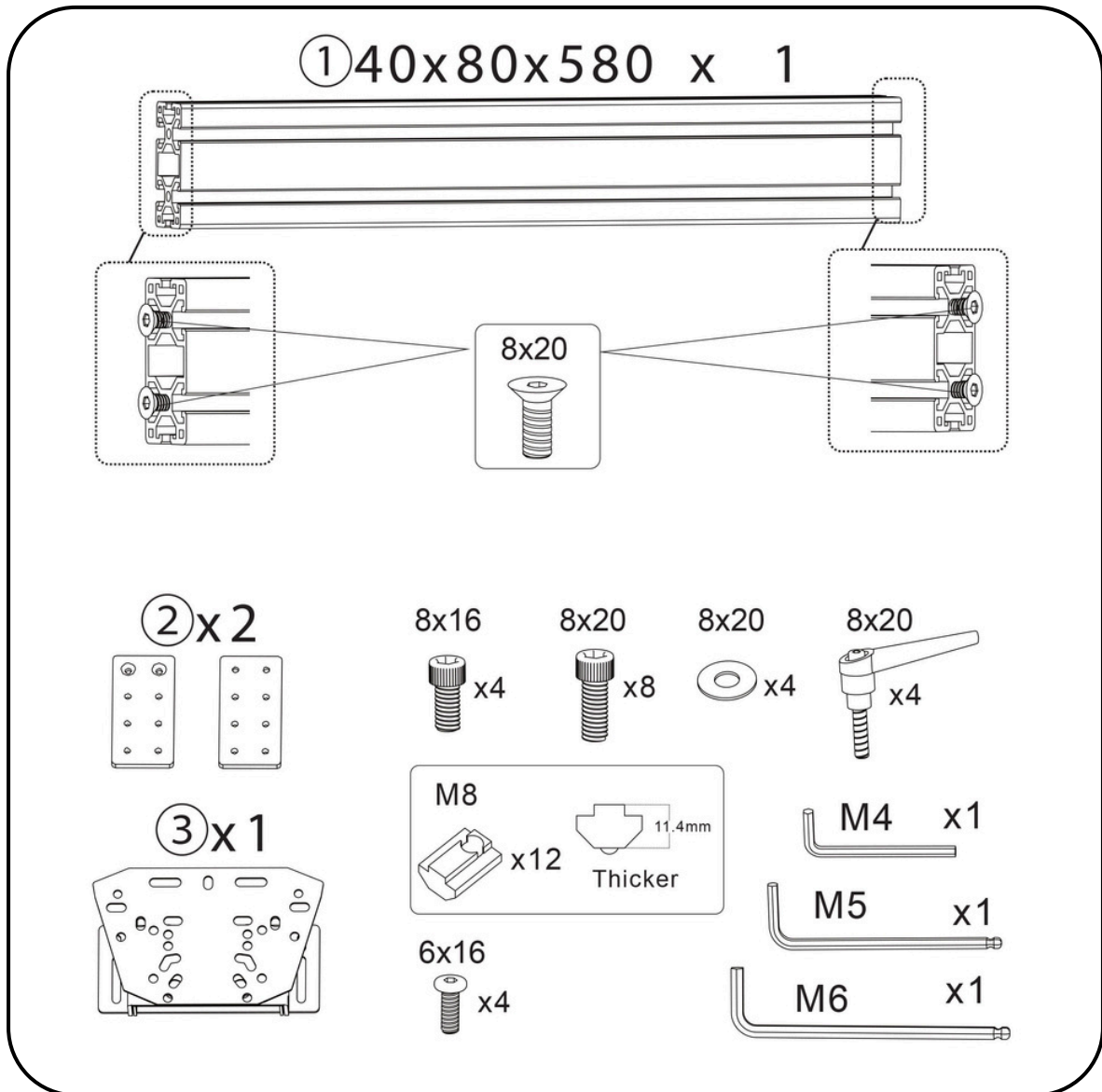
a Attach the gear shifter plate to the arm using countersunk bolts

b Turn the rig on its side, insert T-nuts in the underside channels, and install the feet.



Add the end caps to the uprights after installing the wheel deck.

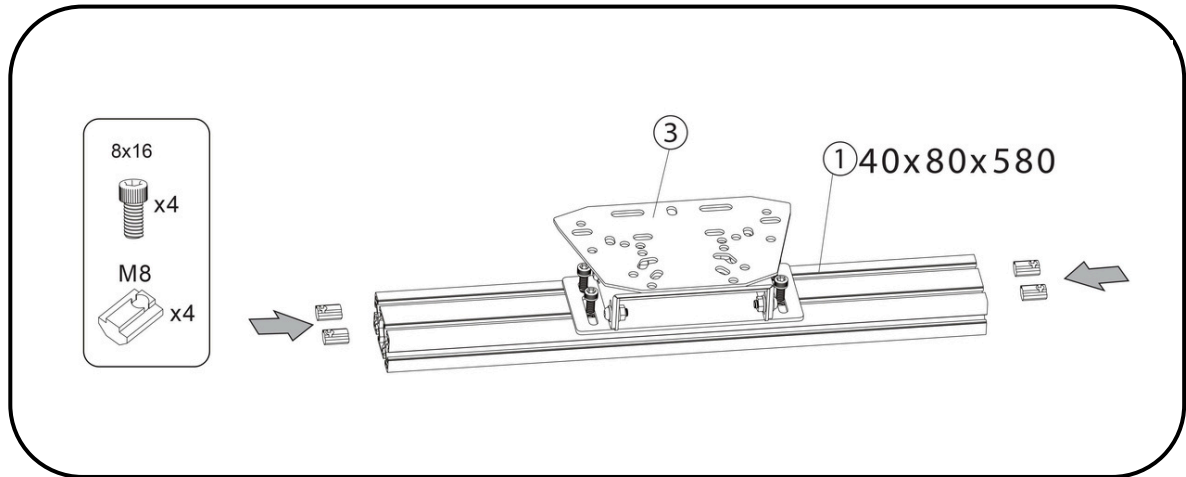
WHEEL DECK



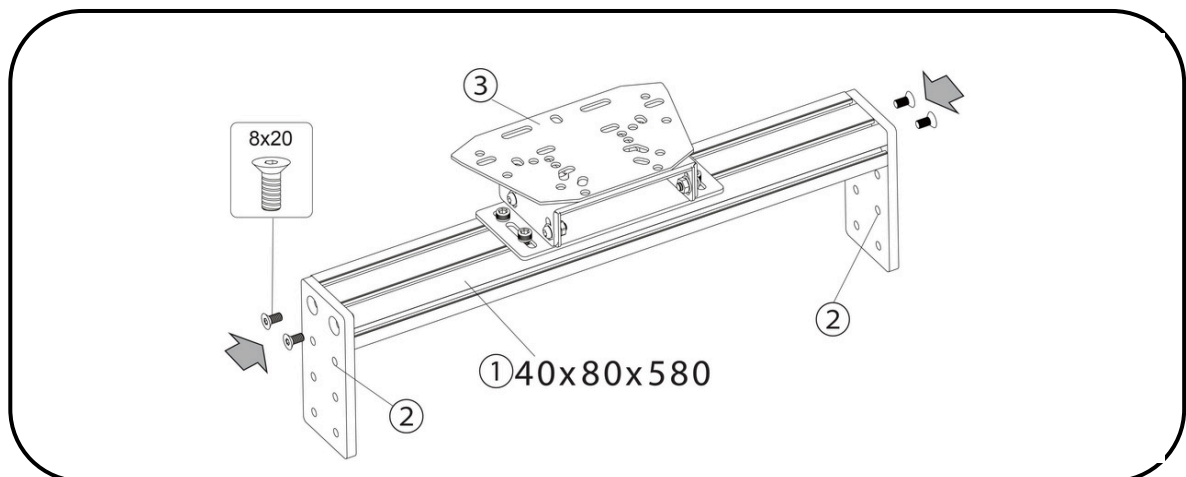
If you are missing any parts, please contact our customer support team who can assist.

ASSEMBLY INSTRUCTIONS

1



2



1 Connect wheel decks using T Nuts and Bolts

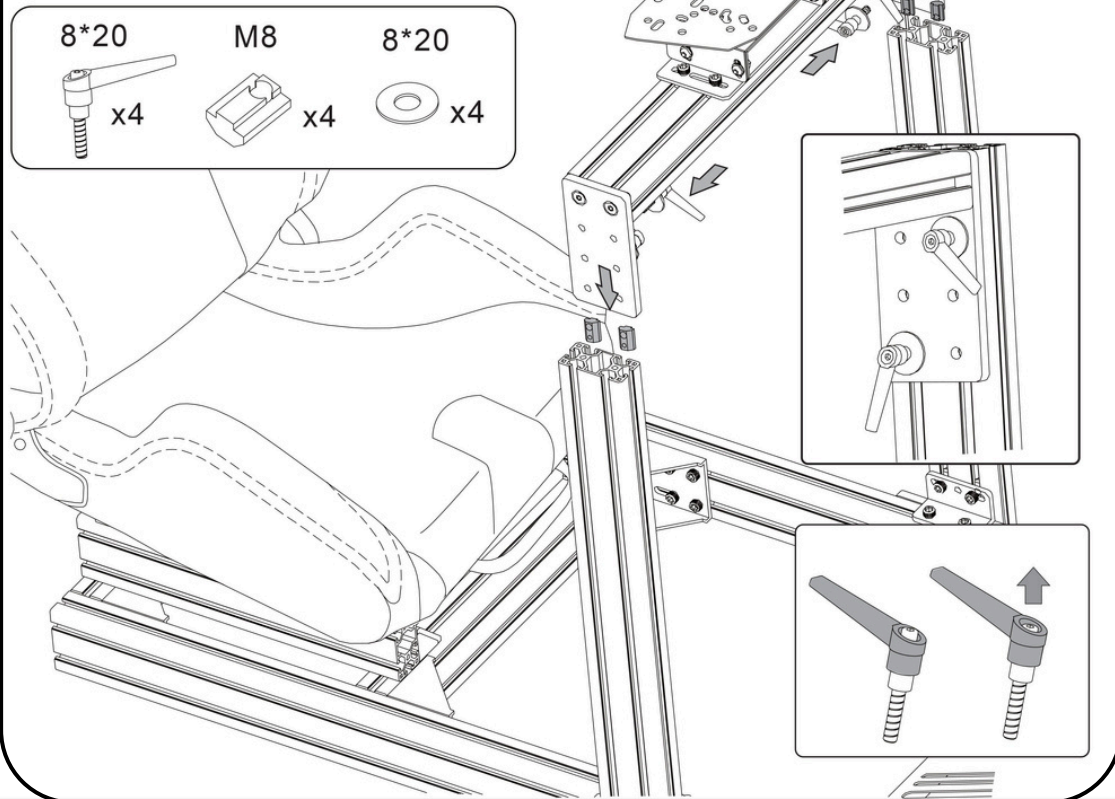
2 Using counter-sunk bolts, attach the sandwich plates to either end of the profile

! Avoid over-tightening screws. As this may damage the product.

ASSEMBLY INSTRUCTIONS

3

Mounting Option 1



- 3** Connect the sandwich plates to the upright sections using t-nuts and Bristol levers. Place a spacer in between the lever and the sandwich plate.



This is the preferred method of mounting the wheel deck for people who expect to be making adjustments to wheel deck height.

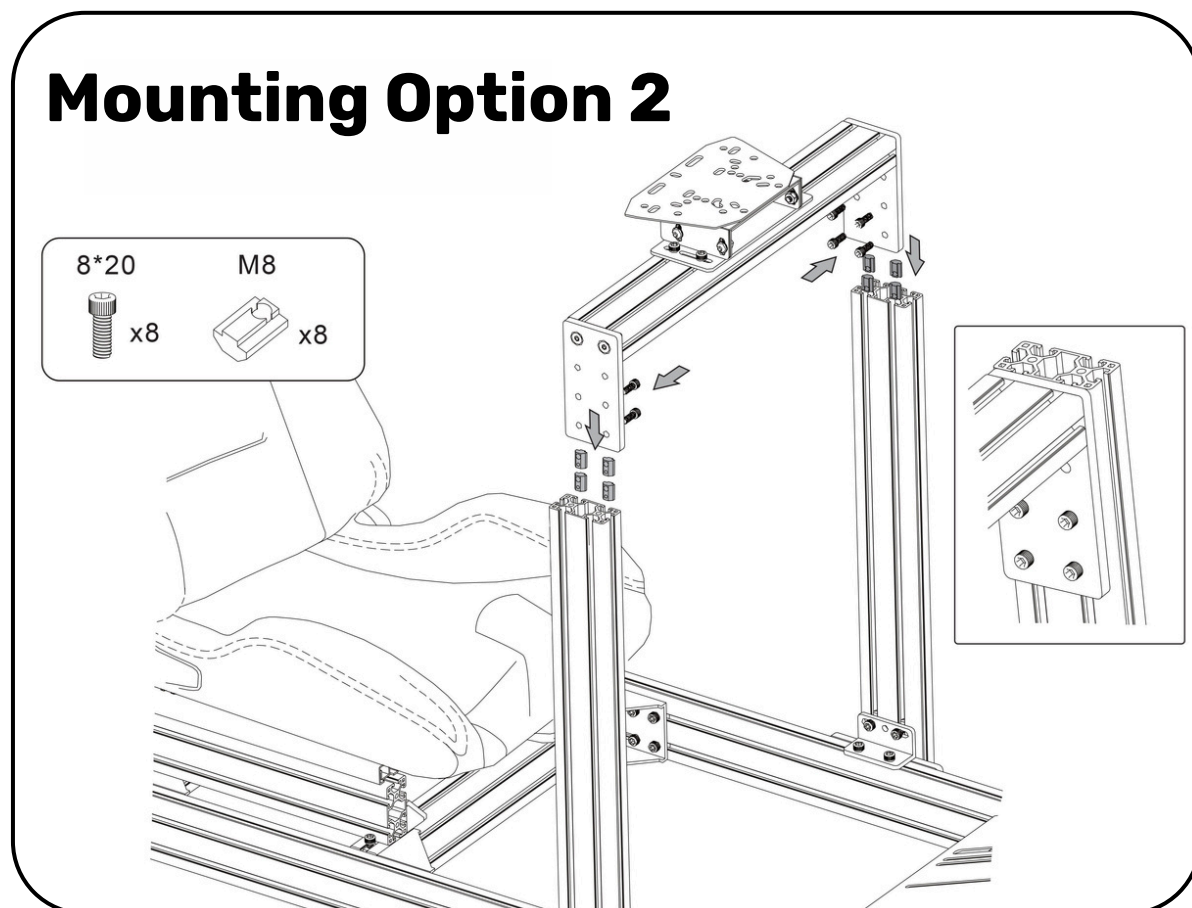


Avoid over-tightening screws. As this may damage the product.

ASSEMBLY INSTRUCTIONS

3

Mounting Option 2



- a** Connect the sandwich plates to the upright sections using t-nuts and bolts.



This mounting option removes easy adjustability in favour of rigidity.



Avoid over-tightening screws. As this may damage the product.

Unlock the full potential of your

PRIME LITE



PRIME Keyboard Tray

This practical attachment gives you the control you need without ever having to leave your seat. The PRIME keyboard tray can be mounted at any height on the left- or right-side of your cockpit.



PRIME Caster Wheels

Highly mobile wheels with ultra-durable construction. These heavy-duty caster wheels come in a set of 6. Height adjustable rubber feet protect your floors and help you keep your cockpit balanced.



Simulator Floor Mat

The Simulator Floor Mat is designed to provide a slip and vibration free surface for your cockpit. The perfect finishing touch for any racing set up.



Simulator Monitor Stand

The Simulator Monitor Stand offers stable, eye-level screen placement with no vibrations. Upgradable to triple and quadruple screen setups. Strong, adjustable, and built to last.

Bundle and Save!

Save **up to 17%** on your sim racing accessories when you build your own accessory bundles.

[View Sim Accessory Bundles](#)