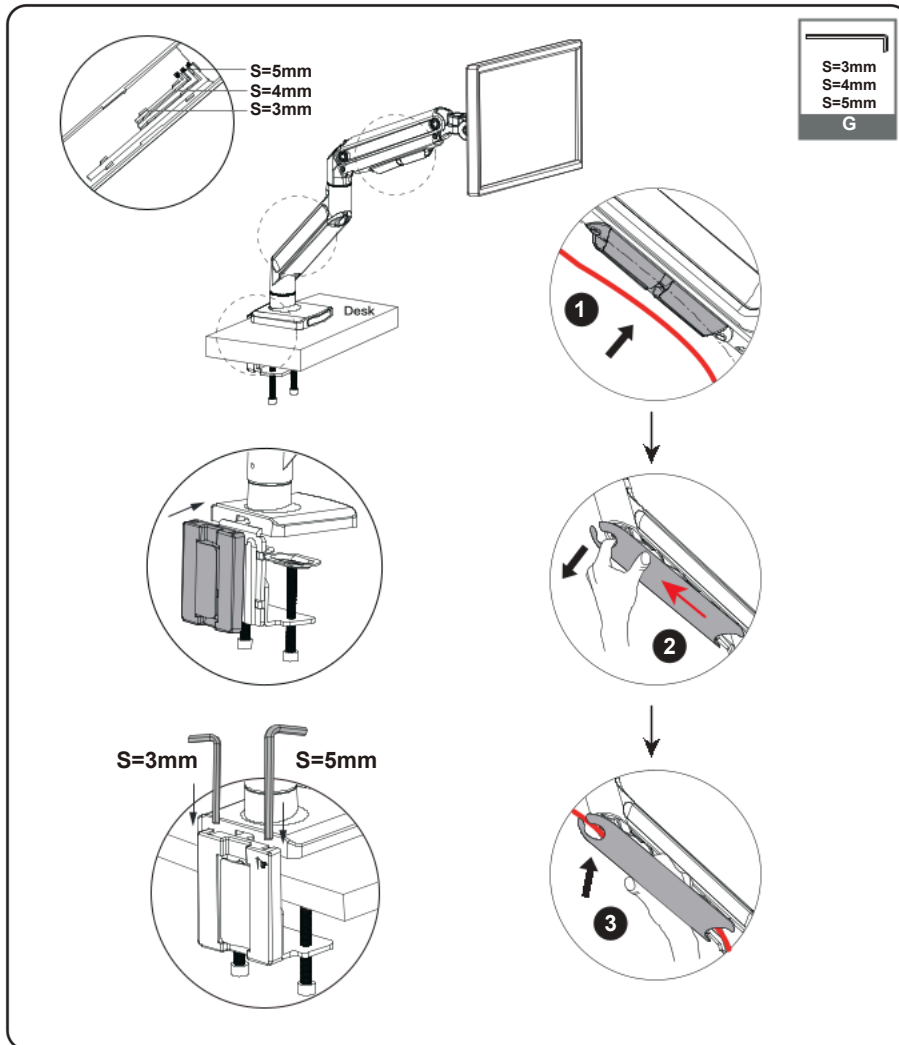


ASSEMBLY INSTRUCTIONS

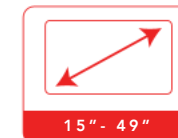
8 CABLE MANAGEMENT INSTALLATION



Organize cables using the clips in the upper arms.
Pull the lower cover out as shown, run cables through the lower arms and reattach the covers.

GT Omega®

STAY AHEAD OF THE GAME



ΩMEGA NOMIC

ULTRALIFT

www.gtomega.co.uk

TABLE OF CONTENTS

PAGE 1

NOTICES

PAGE 2

WHAT'S IN THE BOX

PAGE 3-10

ASSEMBLY INSTRUCTION



Need Help? We're here for you! Contact our support team:



*Handling times targeted at 24 hours.
Please allow time for a response.*

ASSEMBLY INSTRUCTIONS

7

TILT, SWIVEL AND ROTATION ADJUSTMENT

VESA Swivel Adjustment

S=4mm

VESA Tilt Adjustment

S=5mm

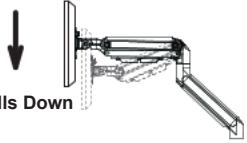
Desk

Legend:
Black circle with '+' sign: Increase tension for heavier monitors
Red circle with '-' sign: Decrease tension for lighter monitors

360°
Rotation

Use a 5mm hex wrench to adjust the damper for Tilt, Swivel and Rotation.
Turn counter-clockwise to reduce damping and clockwise to increase damping.


ASSEMBLY INSTRUCTIONS



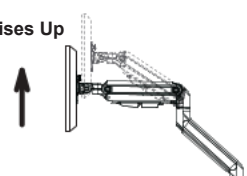
Falls Down

Problem:
After being attached to the arm, the monitor falls downward and can not stay at the desired height by itself.

Solution:




Turn counter-clockwise("+" direction) to increase gas spring tension until the monitor can stay at the desired height by itself.



Rises Up

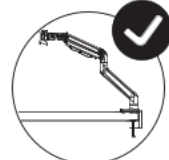
Problem:
After being attached to the arm, the monitor rises upward and can not stay at the desired height by itself.

Solution:

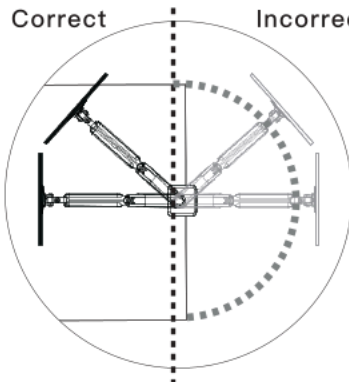


Turn clockwise("-" direction) to reduce gas spring tension until the monitor can stay at the desired height by itself.

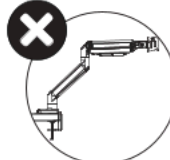
6 ROTATION RESTRICTION




Correct



Incorrect





Please do not move the stand outside the desk for safety!

WARNING



FAILURE TO COMPLY WITH OR OBSERVE ALL ASSEMBLY, SAFETY, AND OPERATION INSTRUCTIONS REGARDING THE USE OF THIS PRODUCT MAY RESULT IN **PROPERTY DAMAGE OR BODILY INJURY.**



Prior to the installation of this product, the installation instructions must be read and completely understood. Failure to do so may result in personal injury, property damage or voiding of warranty.



Do not install on a structure that is prone to vibration, movement or impact. Reinforce the structure as required before installation.



The desk clamp can support a maximum thickness of 850 mm. Confirm the thickness of your desk before installation.



Exceeding the weight capacity can result in malfunction, injury, and property damage.

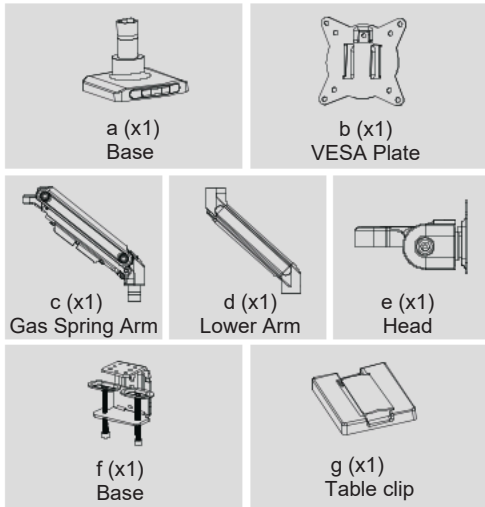


Do not attempt to construct or operate the mount if parts are missing or damaged. Please contact our customer support team to assist.

WHAT'S IN THE BOX

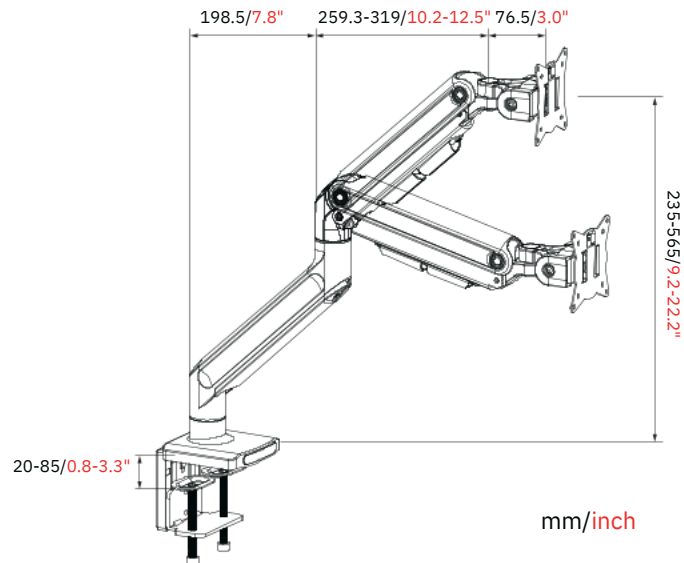


TOOLS REQUIRED NOT INCLUDED



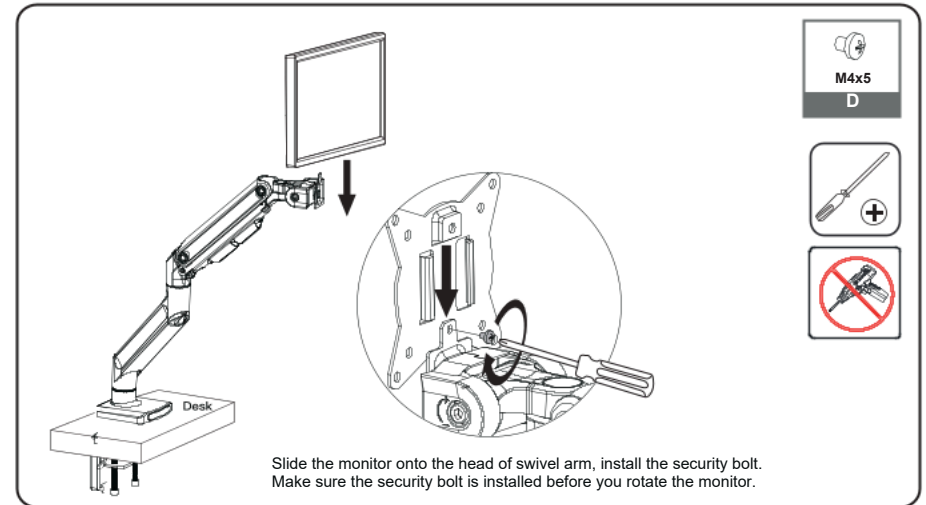
A	M4x12 (x4)	M4x30 (x4)	12x5.8x16 (x4)
B	M6x12 (x4)	15x10.1x2.5 (x1)	
C	Cap(x1)	Ø22.8x14.3x1.5(x1)	M6x16(x1) (x1)
D	M4x5 (x1)	E	(x1)
F	M10x100 (x1)		
G	S=3mm (x1)	S=4mm (x1)	S=5mm (x1)

DIMENSIONS AND ANGLE ADJUSTMENTS

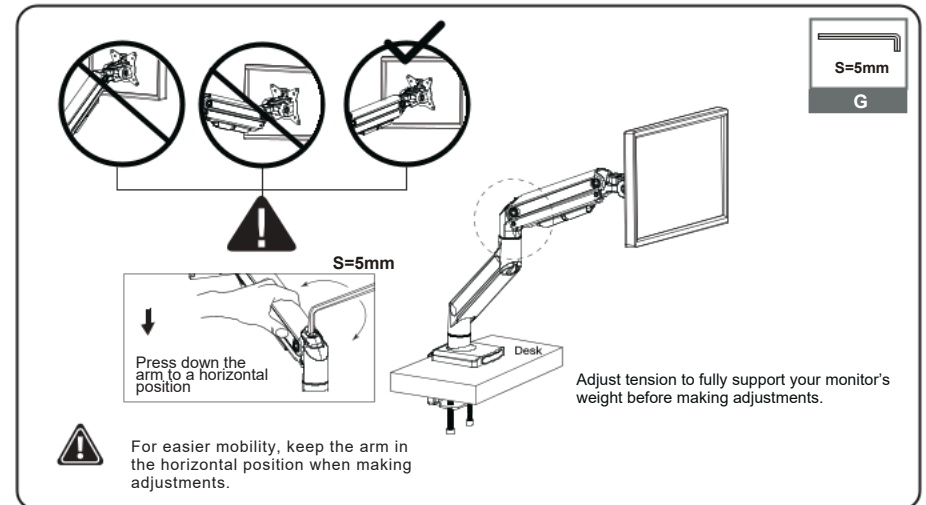


ASSEMBLY INSTRUCTIONS

6 HANG MONITOR



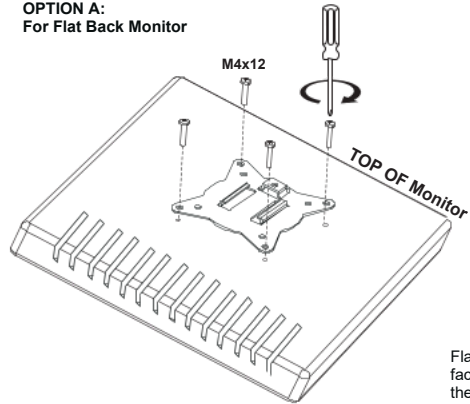
7 ADJUST TENSION



ASSEMBLY INSTRUCTIONS

6 ATTACH MONITOR

OPTION A: For Flat Back Monitor



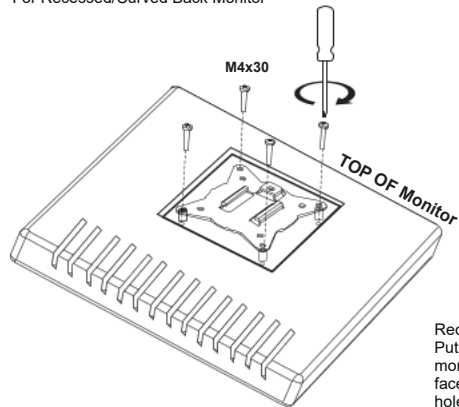
M4x12

A



Flat surface installation: Install 4 short screws through faceplate to monitor via mounting holes. Do not tighten the screws excessively or your monitor might be damaged.

OPTION B: For Recessed/Curved Back Monitor



M4x30

M4x30

A

12X5.8X16

A



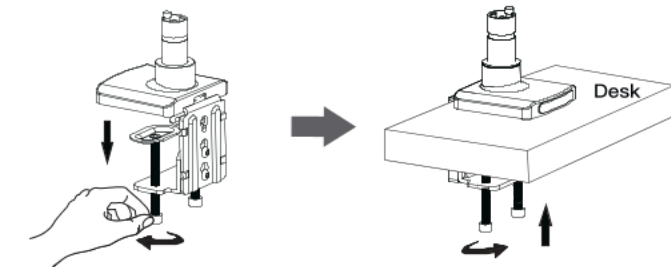
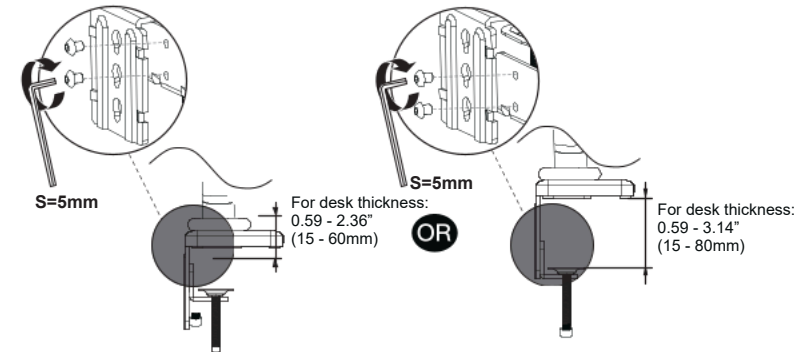
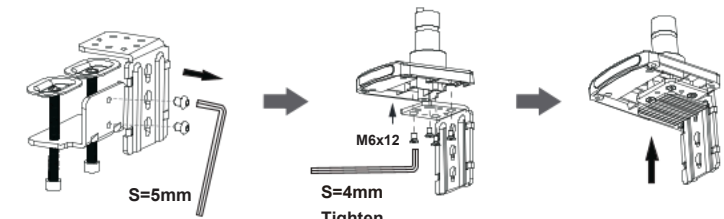
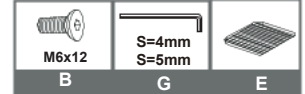
Recessed/Curved surface installation: Put 4 spacers between faceplate and monitor. Install 4 long screws through faceplate, spacers to monitor via mounting holes. Do not tighten the screws excessively or your monitor might be damaged.

NOTE: Hand tighten screws to avoid overtightening

ASSEMBLY INSTRUCTIONS

1 OPTION A

CLAMP INSTALLATION

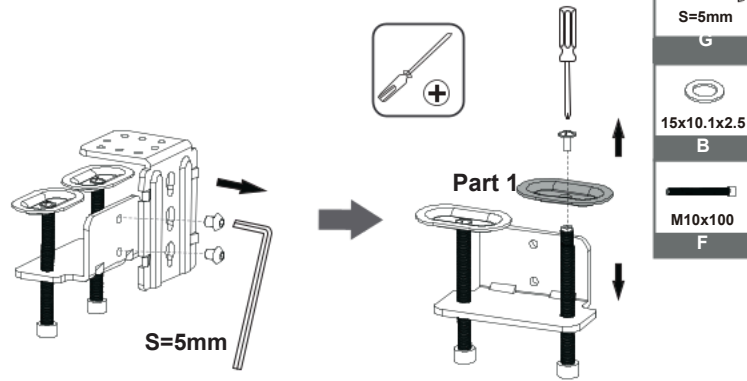


Adjust the clamp width to fit with desk. Secure stand to desktop by tightening clamp.

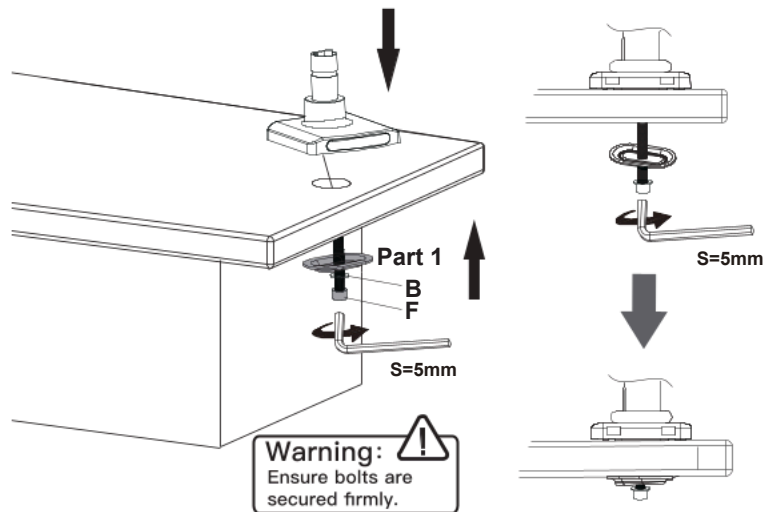
ASSEMBLY INSTRUCTIONS

1 OPTION B

GROMMET BASE INSTALLATION



NOTE: If your desk has an existing grommet hole, remove plastic cover before installation. If there is no existing grommet hole, make a mark on your mounting surface, and use a drill to drill a hole (10-12mm) in the mounting surface.

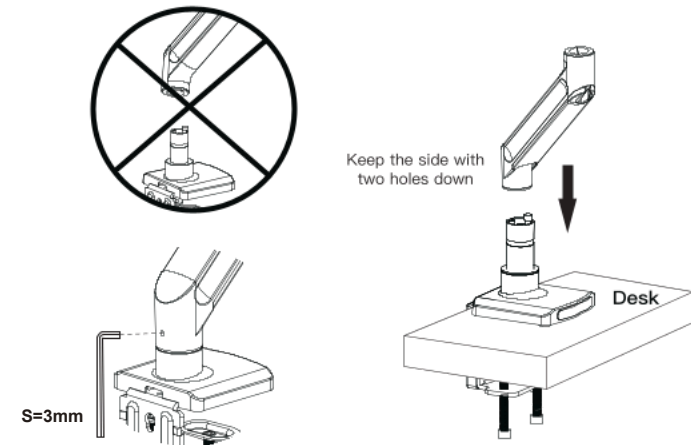


Warning: Ensure bolts are secured firmly.

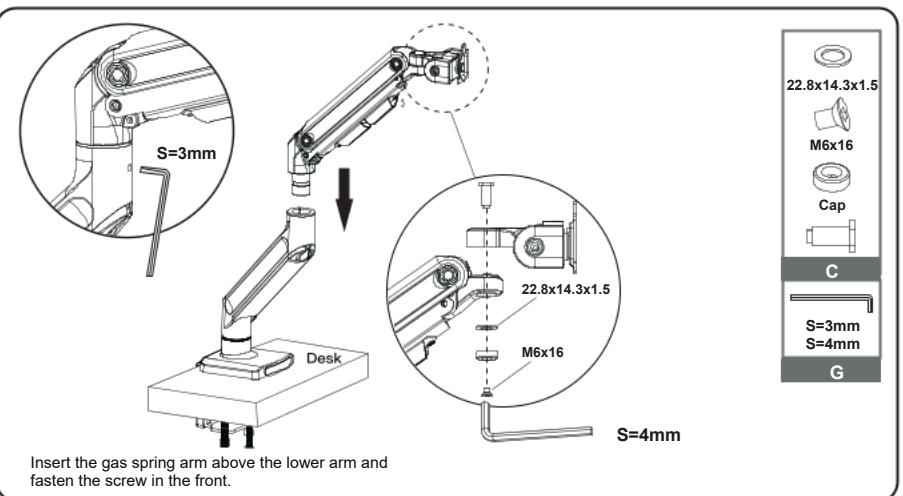
ASSEMBLY INSTRUCTIONS

2

ARM INSTALLATION



Install the lower arm to the base. Secure the arm by tightening the inside screw using 3mm Allen key.



Insert the gas spring arm above the lower arm and fasten the screw in the front.